



CITY OF PROSSER
Washington



For Immediate Release

February 9, 2022

*PO Box 1639
Prosser, WA 99350
(509)786-2332
Fax (509)786-3717
www.cityofprosser.com*

Media Contacts:

City of Prosser
Tom Glover, City Administrator
tglover@ci.prosser.wa.us
(509) 786-8217

*Prosser Memorial Health
723 Memorial Street
Prosser, WA 99350
www.prosserhealth.org*

Prosser Memorial Health
Shannon Hitchcock, Chief Communications Officer
shannonh@prosserhealth.org
(509) 786-6601

Work on the I-82 Utility Project has resumed!

The intersection of Merlot and Wamba Road will be closed to through traffic due to construction work as part of the I-82 Utility Crossing Project. The intersection will be closed beginning Wednesday, Jan. 26th, until further notice. Temporary traffic control signs and detour signs will be in place on the following roads for the duration of the project: Merlot, Wamba, OIE, Port Avenue, Wine Country Road, and Chardonnay. Please obey all of the traffic control signs that will be in place for the project.

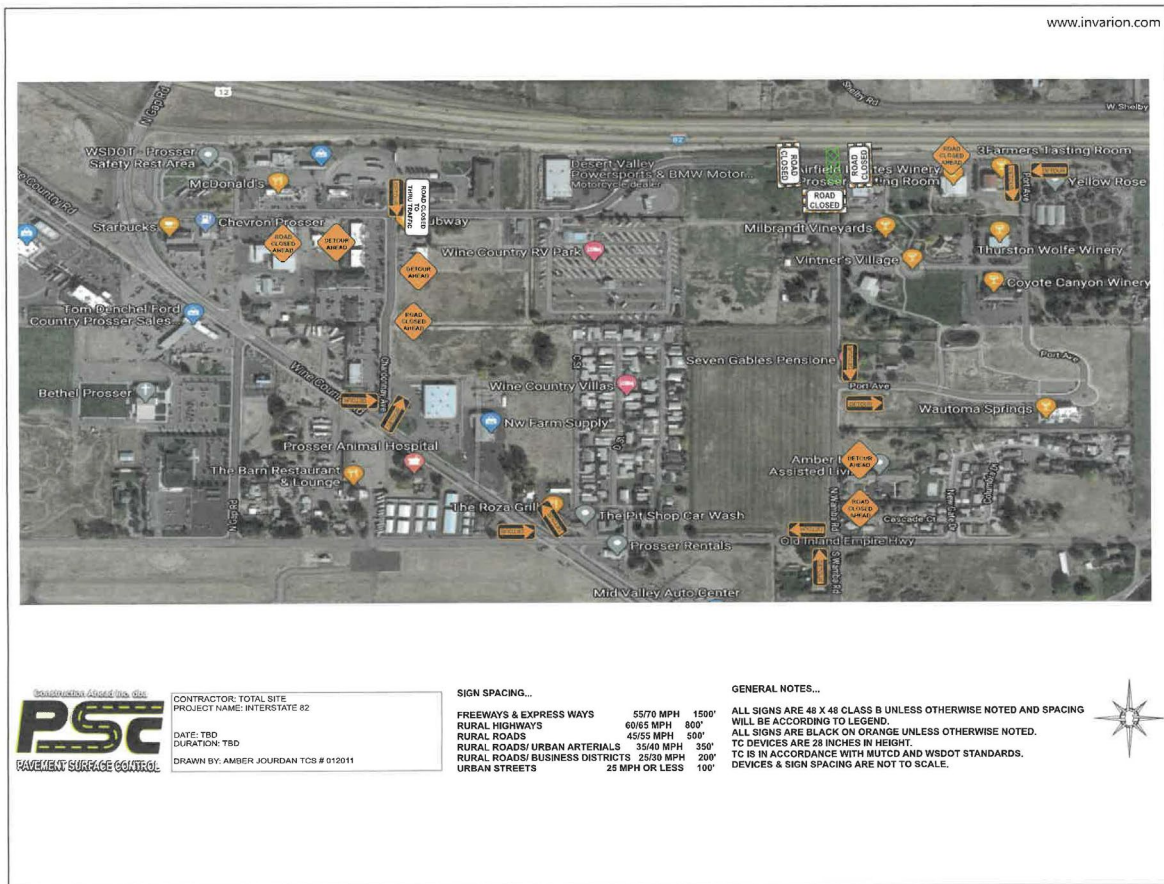
The project extends water and sewer utilities to the north side of I-82 for future commercial and residential development (all within city limits). It began in November 2020 with the installation of water and sewer lines along the north side of I-82, from Wamba Rd., west to the north line of the property where Prosser Memorial Health (PMH) intends to construct their replacement hospital. The bore drilling part of this project underneath I-82 was stopped in February 2021 due to inconsistent rock conditions. An alternate bore method was devised, along with a change order approved by City Council, but work could not resume until after irrigation season had closed. Contractor is now back on site, and the work has resumed. Expected completion is late spring or early summer.

“The City of Prosser earnestly appreciates the community support for this important infrastructure improvement. Together with our partners at Prosser Memorial Health, we are working diligently to plan for the future of our community. It is our hope that this short-term inconvenience will be seen as a long-term benefit for the Prosser community as PMH builds top medical services for our residents. In the meantime, we ask for your patience, understanding, and to please support our local businesses,” said Prosser City Manager Tom Glover.

Access is limited. The barrier at the intersection of Merlot Drive & Chardonnay Avenue directs traffic south onto Chardonnay. From there, traffic is directed south to Wine Country Rd., then east on O.I.E. (Old Inland Empire Highway), then north on Wamba Road, then east onto Port Ave. Port Avenue is the detour route for ingress/egress to Vintners Village and Yellow Rose Nursery. Businesses located east of the barricade, at the intersection of Merlot & Chardonnay are open to the public. There is however, a second barricade “Road Closed” at the east end of the Pacific Pride facility and no vehicles are allowed beyond this barricade.



Likely this limited access will continue to summer. For updates, please check the City of Prosser's Facebook page at: www.facebook.com/cityofprosser Or the City's website at: https://.cityofprosser.com



###